



CLYDESDALE

4 BEDROOM | 3 BATHROOMS | GARDEN
FINISH : CLASSIC

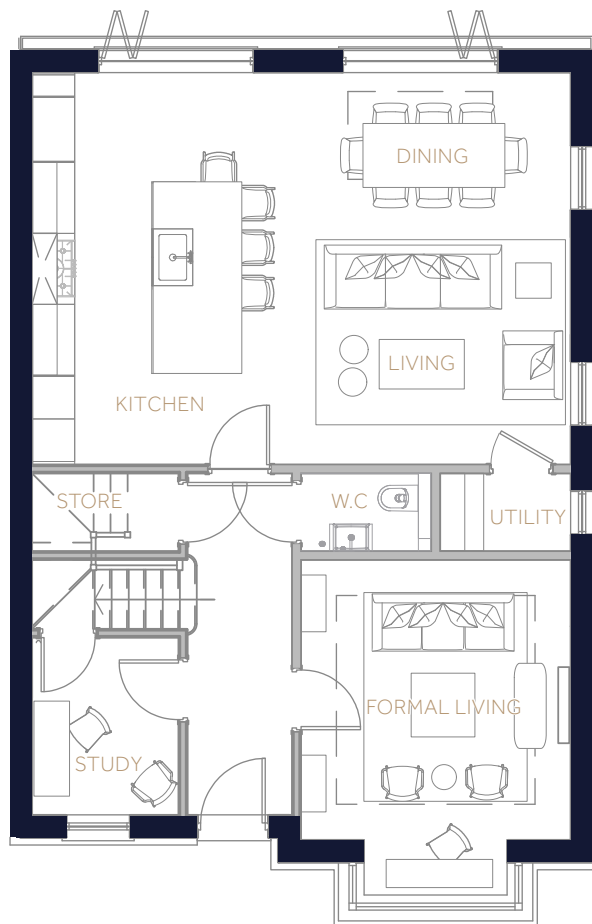
GROUND FLOOR M

Formal Living	4.7 x 3.8
W.C	1.8 x 1.1
Study	2.5 x 2.1
Kitchen/Dining	7.6 x 5.5
Utility	1.8 x 1.1
Store	2.1 x 1.1

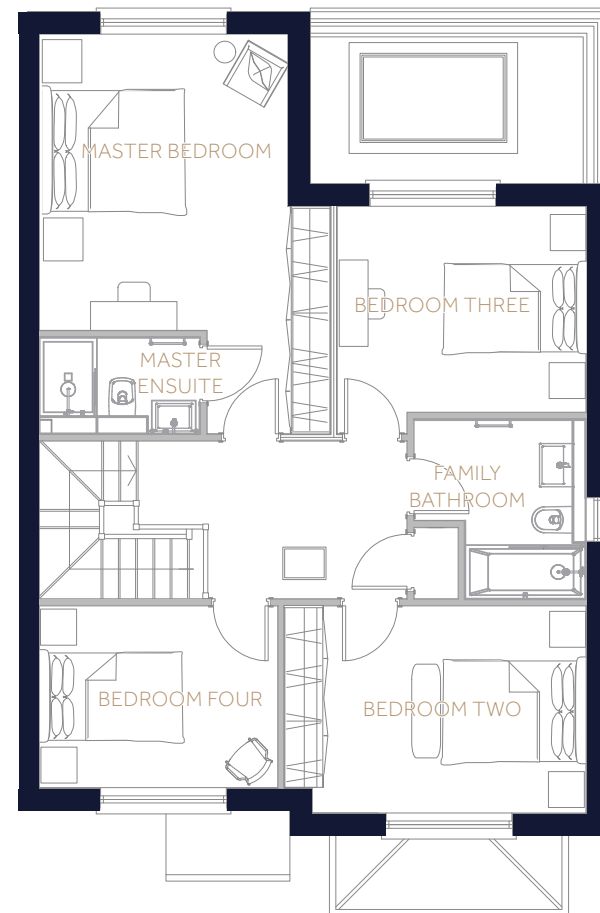
FIRST FLOOR M

Master Bedroom	5.5 x 4.0
Master Ensuite	2.3 x 1.4
Bedroom Two	4.2 x 2.9
Bedroom Three	3.5 x 2.9
Bedroom Four	3.2 x 2.5
Family Bathroom	2.4 x 2.5

TOTAL 153M² / 1,636FT²



GROUND FLOOR



FIRST FLOOR